

In the back of the cabinet the network switches and network cables can be seen

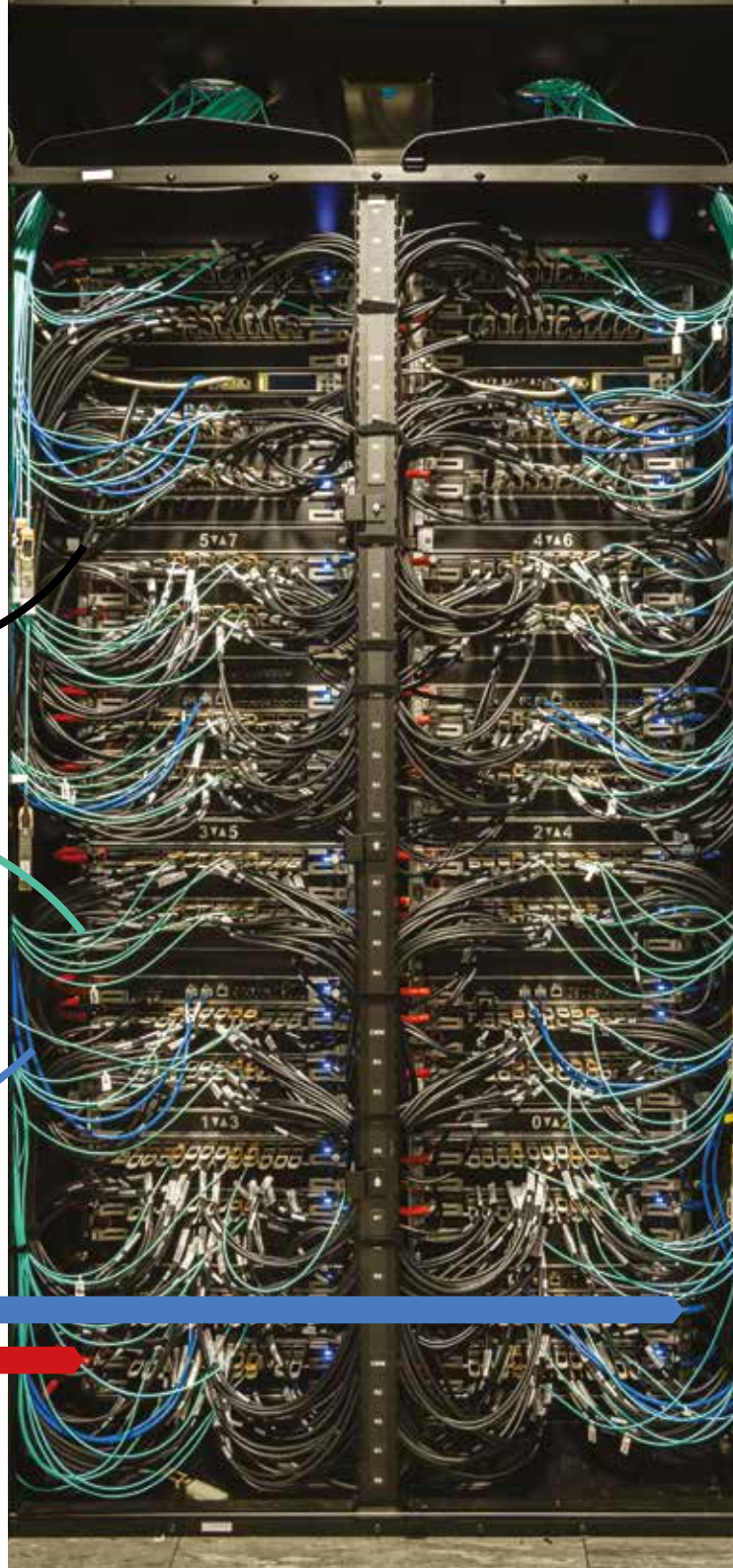
Each chassis has 4 switches and a chassis management module (CMM)

Black cables are copper cables and are for communication within cabinets

Green cables are optical cables and are for communication between cabinets

Blue cables are ethernet cables for the administration network

Blue and red pipes for the liquid cooling loop



archer2





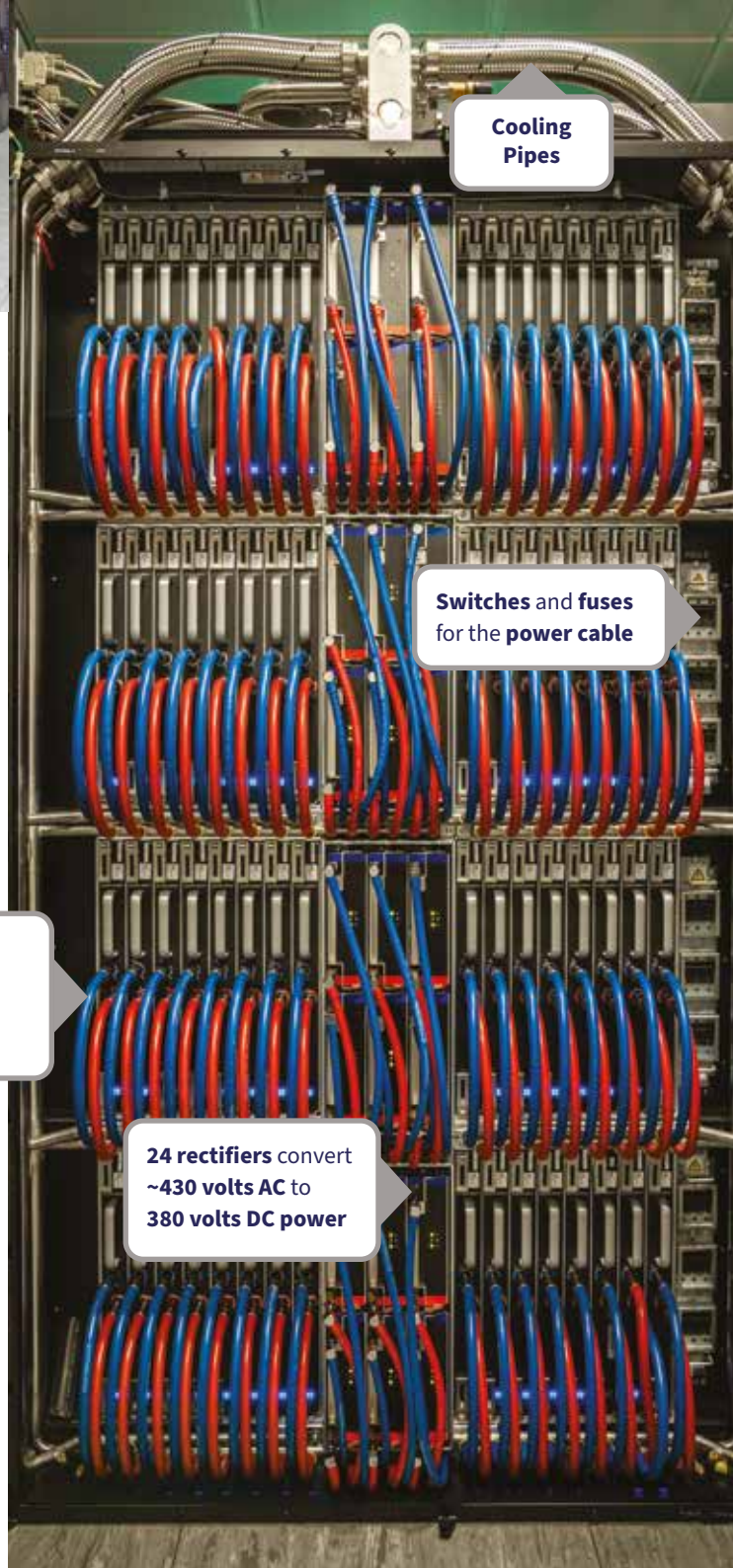
ARCHER2 is a world class advanced computing resource for UK science. It is an HPE Cray EX supercomputing system.

It comprises **23** of these cabinets. Each cabinet has **8 chassis, 8 blades per chassis**

The system is kept cool using **liquid cooling loops**

Blue pipes show the cooler liquid entering the system, **red pipes** show the warmer liquid exiting

Power is provided via cables that come from below the cabinet

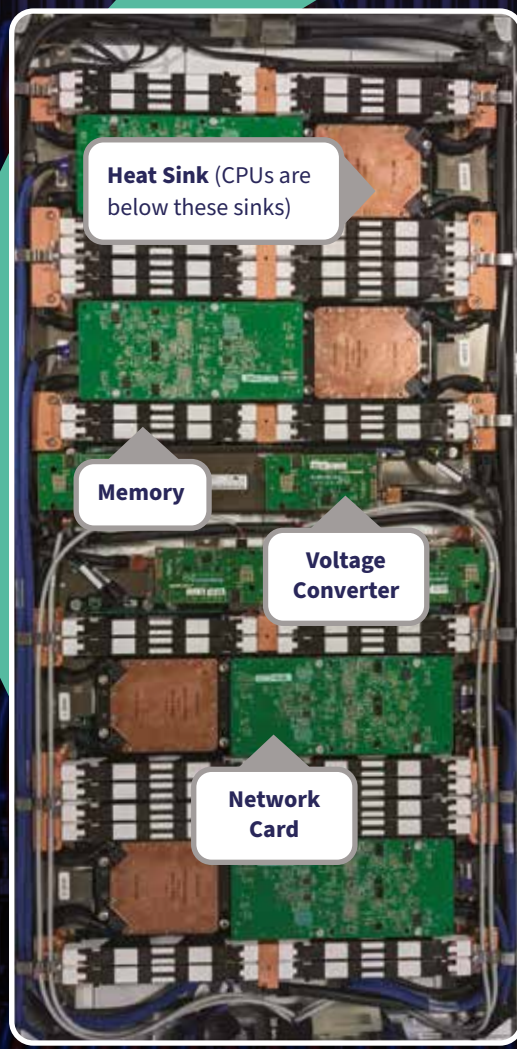


Cooling Pipes

Switches and fuses for the **power cable**

24 rectifiers convert **~430 volts AC** to **380 volts DC power**

Each blade has **4 nodes**
Each node has **two 64-core CPUs**
A total of **32,768 cores per cabinet**



Heat Sink (CPUs are below these sinks)

Memory

Voltage Converter

Network Card

